



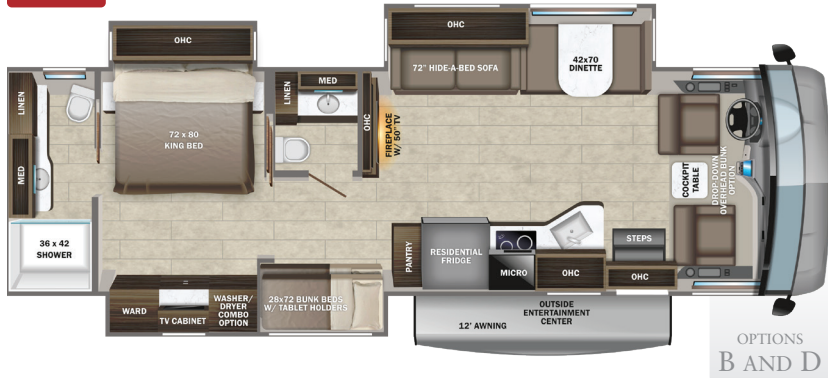
ENTEGRACOACH®

2023 Emblem

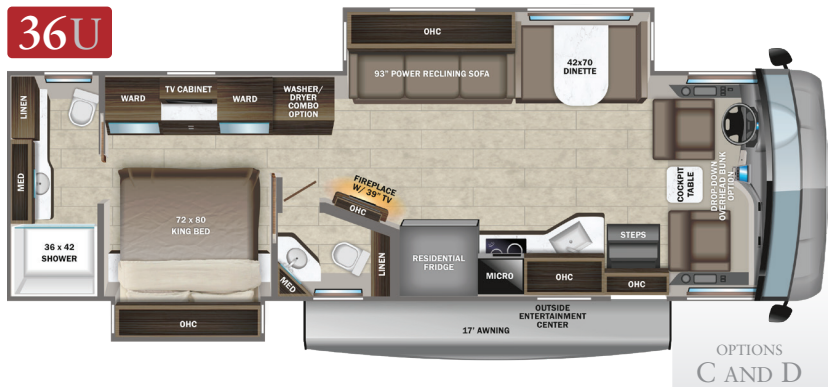
36H



36T

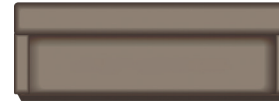


36U



OPTIONS

A



120" Reclining Sofa Option

B



Theater Sofa Option

C



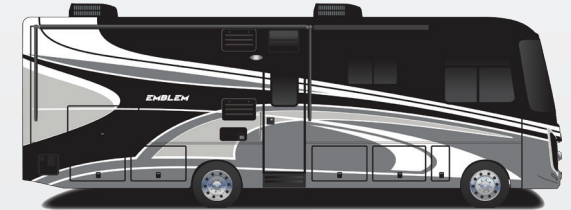
Freestanding Dinette Option

D



12 Cu. Ft. Fridge Option

EXTERIOR SELECTIONS



Appalachia Full-Body Paint



Coastal Full-Body Paint



Ozark Full-Body Paint



Plains Full Body-Paint

INTERIOR DÉCOR

Carbon



Fossil



Emblem

Standards & Options

CUSTOMER VALUE PACKAGE

E-Z DRIVE™ ELITE: Computer-balanced driveshaft, Bilstein® steering stabilizer, Koni® shocks, variable-rate front and rear jounce bumpers, heavy-duty front and rear stabilizer bars, 22.5 in. Michelin® tires
Automatic hydraulic leveling jacks
Frameless windows
15,000 BTU A/C unit with heat pump and second 13,500 BTU A/C unit
Exterior entertainment center with outside speakers, LED HD Smart TV mounted on swivel bracket and single-disc DVD/FM radio
Electric patio awning with LED lights
Slideout awning(s)
Onan® Marquis Gold Genset 5,500W generator with auto-gen start 2,000W inverter
50 amp electrical service
10 gal. gas/electric water heater
Pioneer® 8 in. infotainment center with Apple CarPlay® and Android Auto™
Backup and side-view cameras
Removable driver/passenger cockpit table
LED-lit, solid-surface kitchen countertops with recessed stainless steel sink and sink covers
LED HD Smart TV in living area
Day/night roller shades in living area

STANDARD EXTERIOR EQUIPMENT

Ford® F53 chassis
GVWR- 24,000 lb.
GCWR- 30,000 lb.
7.3L V-8 350 HP engine with 468 ft.-lb. torque
6-speed automatic TorqShift® transmission with overdrive and tow haul mode
210 amp alternator
G-rated highway tires-245/70R19.5
Front and rear disc, 4-wheel anti-lock brakes
5,000 lb. rear hitch receiver with dual connector and 7-pin plug
12V chassis battery
80 gal. fuel tank
Transfer switch with reverse polarity protection
(2) 6V AGM (220Ah) house batteries on slideout tray
190W solar panel with dual controller
30,000 BTU auto-ignition ducted furnace
Electric fireplace
24.5 gal. propane tank (83 lb.)

LP quick-connect hookup
Thetford® Sani-Con® Turbo macerator system
Exterior utility center
Winterization drain system
Black tank flush
Outside shower
12V demand water pump
Water filtration system
TuffShell™ vacuum-bond laminated roof, floor and sidewalls
Bead-foam insulation (R-24 max roof, R-9 max floor, R-5 max walls)
One-piece, seamless, crowned fiberglass roof
One-piece, seamless fiberglass front and rear caps
Premium Sikkens full-body paint
Entrance door with industry's largest travel-view window
Electric-powered entrance step
Lockable pass-through storage compartments with slam latches
Roof ladder
Third brake light

STANDARD INTERIOR EQUIPMENT

Power front privacy shade with manual side privacy shades
120 in. panoramic windshield
6-way power and swivel driver/passenger seats
Soft-touch, vinyl-wrapped automotive dash
A/C and cruise control
Tilt steering wheel
Auxiliary start
Firefly Multiplex system
84 in. interior ceiling height with padded vinyl ceiling
High-intensity recessed LED ceiling lights
Vinyl plank flooring
LED-lit hardwood fascia
Raised-panel hardwood cabinetry throughout
Deluxe hidden cabinet hinges
Ball-bearing drawer guides
Entegra-exclusive, easy-operation legless dinette table
Prep for satellite dish
Cable TV hookup with RG-6 coax
Winegard 2.0 Wi-Fi/4G antenna
Wood-framed kitchen window with spice cabinets
Residential refrigerator
2-burner induction cooktop
Residential-size convection microwave oven
Shower with decorative surround, glass door, skylight and light
Recessed, LED-lit, stainless steel bathroom sink
Porcelain toilet with foot flush

Powered roof vent in bathroom with wall switch
Walk-around, king-size bed with bedspread and nightstands
USB port and wireless charging in nightstands
Under-bed storage (select models)
LED HD Smart TV in bedroom
Large wardrobes
Bunks with industry-exclusive, 300 lb. capacity each (36T)
Wall-mounted tablet holder in each bunk (36T)
2-point lap safety belts in all designated seating locations
Smoke alarm
Carbon monoxide detector

OPTIONS

Drop-down overhead bunk in cab area with 750 lb. capacity
Power theater seating (36H, 36T)
120 in. straight reclining sofa (36H)
Freestanding table with 4 chairs (36U)
12 cu. ft. gas/electric refrigerator
Combination washer/dryer (36T, 36U)
Stackable washer/dryer (36H)

WARRANTY



NO ONE OFFERS A BETTER WARRANTY

At Entegra Coach, we build our RVs to handle every adventure, then back them with our industry-leading 2+3 limited warranty. Our 2-year limited warranty has you covered for 2 camping seasons. That's 730 days. In addition, our 3-year structural limited warranty has you covered for 3 camping seasons or 1,095 days. You won't find a better limited warranty in the business, because the only strings we attach are those that deliver the ultimate in reliability. For a copy of our 2-year limited + 3-year structural limited warranty with complete terms and conditions, please contact your local Entegra Coach dealer.

It is important for your safety and enjoyment that you are aware of the weights and tow ratings of the RV you select. Consult a competent advisor for questions or advice. Whether you are new to RVing or a veteran, get a feel for the performance of your RV before heading out on the roadways. When you tow a vehicle with your RV, you must drive differently than when you drive a single vehicle. Practice hooking up, driving, backing up and braking in a safe environment or seek out professional instruction. Jayco affixes a weight label to each RV which lists weight information for that vehicle. Refer to that label to verify the vehicle will meet your requirements. Gross Vehicle Weight Rating (GVWR): The maximum permissible weight of the motorhome, including the Unloaded Vehicle Weight (UVW) plus passengers, personal items, all cargo, fluids, options and dealer-installed accessories. The GVWR is equal to or greater than the sum of the UVW and the Cargo Carrying Capacity. Gross Combined Weight Rating (GCWR): The maximum allowable combined weight of the motorhome used as a tow vehicle and the attached towed vehicle.

Floorplan	GVWR (lbs.)	GCWR (lbs.)	Wheel Base	Overall Length	Exterior Height w/ A/C & Satellite	Exterior Width	Interior Height	Fresh Water Capacity (gal.)	Grey Waste Water Capacity (gal.)	Black Waste Water Capacity (gal.)
36H	24,000	30,000	252	38' 8"	12' 10"	101	84	72	40/50	40
36T	24,000	30,000	252	38' 8"	12' 10"	101	84	72	50/41	31/41
36U	24,000	30,000	252	38' 2"	12' 10"	101	84	72	50	31/41